

This catalog covers:
FE250D-□G81

This fig. covers:
TITLE

PARTS CATALOG

4-STROKE ENGINE

FE250D

PRODUCT CODE	NOTE
FE250D-AG81	TILLER (GR683)
FE250D-BG81	

PARTS CATALOG INTRODUCTION

This parts catalog lists parts and sub-assemblies provided as service parts.

When it becomes necessary to replace parts, always use KAWASAKI GENUINE PARTS which have passed strict inspection which guarantees quality and performance.

1. HOW TO ORDER PARTS

- When ordering the parts, be sure to use the parts catalog corresponding to the product code. Check the product revision codes on the product and the catalog.
 Product Code (example) : FA130D-AA00
└── Product Revision Code
- Specify the part code (all digits) exactly as listed in this catalog on your parts order.
- The parts not shown in the illustrations of this catalog are not sold separately; only the complete units or next higher assemblies illustrated are supplied as the service parts.

2. EXPLANATION OF PARTS CATALOG FORMAT

This catalog covers: **TH026D-□A10** (1)

This fig. covers: **01 CYLINDER/CRANKCASE** (2) (5) (7)

Ref. No.	Part No.	Description	Quantity
11005	11005-2137	CYLINDER-ENGINE	1
11060	11060-2402	GASKET,CYLINDER	1
11065	11065-2064	CAP	2
14002	14002-2327	CRANKCASE	1
14002A	14002-2328	CRANKCASE	1
34001	34001-2083	STAND	1
92009	92009-2115	SCREW	3
92045	92045-1502	PIN	2
92045	92045-2006	BEARING-BALL,6000C3	2
92049	92049-2074	SEAL-OIL	2
92150	92150-2091	BOLT	4

1 JUN.03.1999 E0110-A216A

1) Product Code

This code describes the product code covered by this catalog. The product revision code, which is a part of the product code, is omitted.

2) Part Group Title

This title is the representative name for the group of parts illustrated on the page.

3) Reference Number

The reference numbers are shown on the illustration and the list as the link between them.

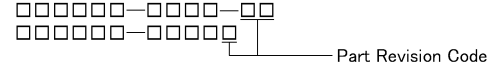
PARTS LIST INFORMATION

4) Part Number

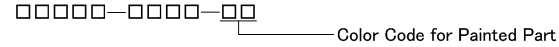
This is the key of your parts ordering.

Three kinds of part number are used in this catalog.

a. Structure 1

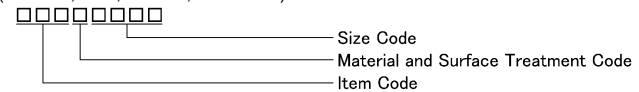


b. Structure 2



c. Standard Hardware Number

(for bolts, nuts, washer, or the like)



5) Description and Additional Information

The part name, the location, the size, and the serial number as additional information, etc. are described here. Use them to find out and check the part required.

When a part number is changed without change of the product revision code and the changed parts are not interchangeable, the serial number of the product is noted as follows;

- (FA130 - 100001) : Affected units are from beginning of the product of the product code up to and including this serial number.
- (FA130 - 100002 -) : Affected units are from this serial number and above.
- (FA130 - 100002 - FA130 - 110001) : Affected units are in this serial number range.

6) Quantity

The figure shows quantity of the part required at the indicated position on the illustration and for the specified product revision code.

The asterisk (*) on this column means the part can be used as the substitute on the product and is supplied until the stock is exhausted.

Note:Some small parts will be supplied by units.

Example: If six (6) bolts are ordered and the minimum quantity per unit is five (5), two (2), units of the bolt will be delivered.

7) Product Revision Code

This Code indicates an important change which affects the service parts interchangeability.

3. ABBREVIATIONS

#.....Number	FR.....Front	RH.....Right Hand
&.....And	G.....Gram	RPM.....Revolutions Per Minute
(+).....Plus	HEX.....Hexagonal	RR.....Rear
(-).....Minus	ID=.....Inside Diameter	STD.....Standard
2ND.....Second	IN.....Inch	T.....Teeth
3RD.....Third	L=.....Length	T=.....Thickness
4TH.....Fourth	LH.....Left Hand	U/S.....Under Size
A.....Ampere	LWR.....Lower	UPP.....Upper
AR.....As Required	MM.....Millimeter	V.....Volt
ASSY.....Assembly	O/S.....Over Size	W.....Watt
CNT.....Center	OD=.....Outside Diameter	
COMP.....Complete	REF.....Reference	

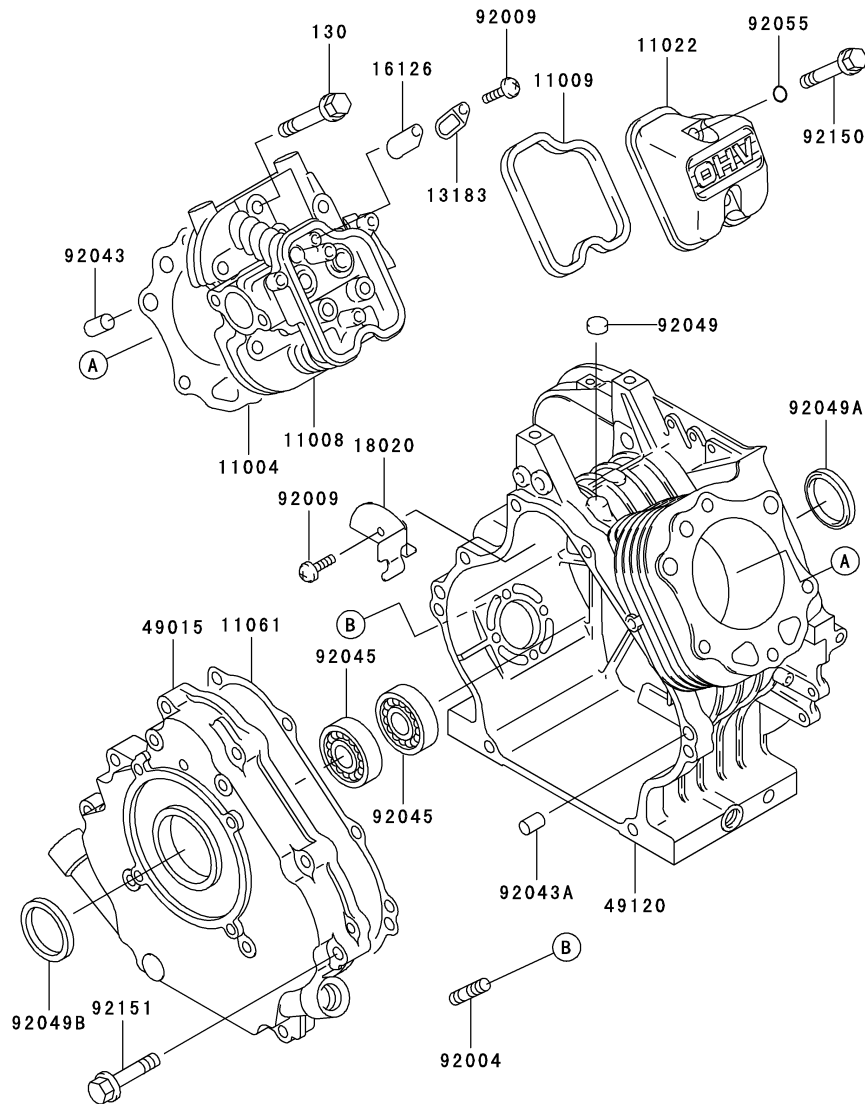
This catalog covers:

FE250D- □ G81

This fig. covers:

01 CYLINDER/CRANKCASE

E0110-A025K



Ref. No.	Part No.	Description	Quantity	
			A	B
11004	11004-2106	GASKET-HEAD	1	1
11008	11008-2086	HEAD-COMP-CYLINDER	1	1
11009	11009-2923	GASKET,ROCKER CASE	1	1
11022	11022-6002	CASE-ROCKER	1	1
11061	11061-2069	GASKET	1	1
13183	13183-2299	PLATE	1	1
16126	16126-2107	VALVE	1	1
18020	18020-2073	BAFFLE	1	1
49015	49015-6135	COVER-CRANKCASE	1	1
49120	49120-2224	CRANKCASE-COMP	1	1
92004	92004-2083	STUD,6X14	4	4
92009	92009-2308	SCREW	2	2
92043	92043-1037	PIN	2	2
92043A	92043-1263	PIN	2	2
92045	92045-2188	BEARING-BALL,6206CM	2	2
92049	92049-2097	SEAL-OIL	1	1
92049A	92049-2199	SEAL-OIL	1	1
92049B	92049-2220	SEAL-OIL	1	1
92055	92055-1343	RING-O	2	2
92150	92150-2145	BOLT,6X35	2	2
92151	92151-2130	BOLT,8X40	8	8
130	130T0845	BOLT-FLANGED	6	6

This catalog covers:

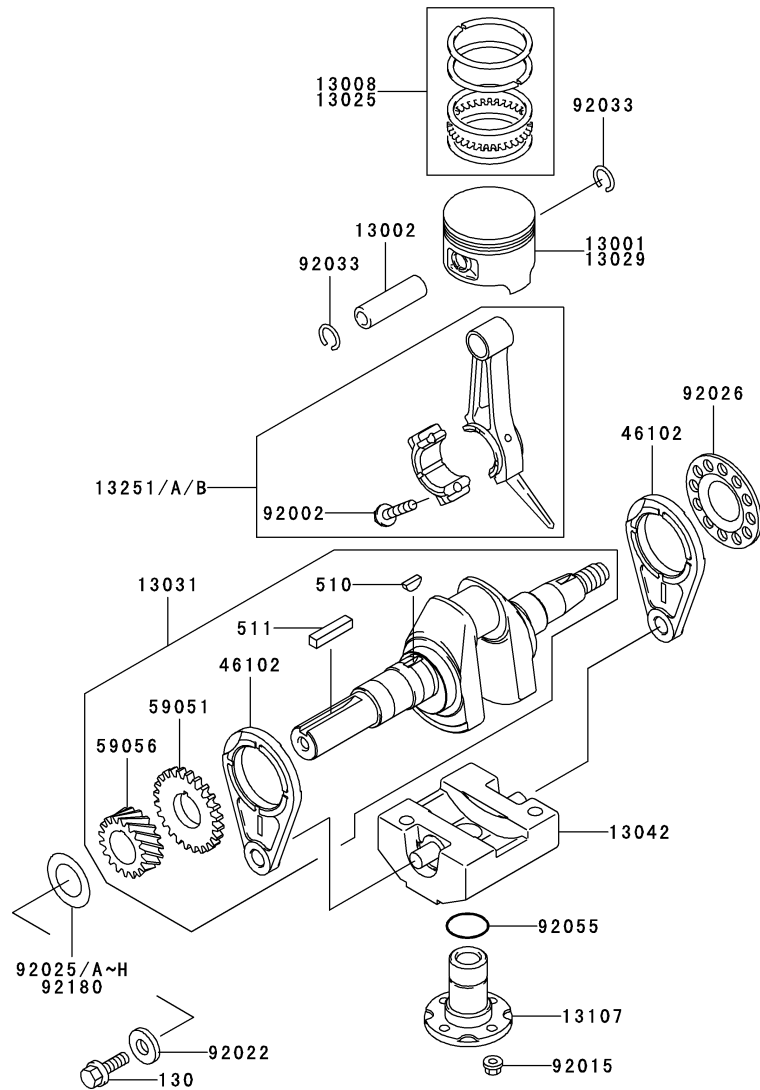
FE250D- □ G81

02

This fig. covers:

PISTON/CRANKSHAFT

E0120-A145C



Ref. No.	Part No.	Description	Quantity	
			A	B
13001	13001-2128	PISTON-ENGINE	1	1
13002	13002-2077	PIN-PISTON	1	1
13008	13008-2055	RING-SET-PISTON	1	1
13025	13025-2097	RING-SET-PISTON L,0.5	AR	AR
13029	13029-2117	PISTON-ENGINE L,0.5	AR	AR
13031	13031-2056	CRANKSHAFT-COMP	1	1
13042	13042-6012	WEIGHT	1	1
13107	13107-2088	SHAFT	1	1
13251	13251-2078	ROD-ASSY-CONNECTING		1
13251A	13251-6038	ROD-ASSY-CONNECTING	1	
13251B	13251-6038	ROD-ASSY-CONNECTING		*
46102	46102-2075	ROD	2	2
59051	59051-2097	GEAR-SPUR	1	1
59056	59056-2995	GEAR-HELICAL	1	1
92002	92002-2053	BOLT	2	2
92015	92015-1193	NUT	4	4
92022	92022-2116	WASHER	1	1
92025	92025-2168	SHIM,T=1.13	AR	AR
92025A	92025-2169	SHIM,T=1.18	AR	AR
92025B	92025-2170	SHIM,T=1.23	AR	AR
92025C	92025-2171	SHIM,T=1.28	AR	AR
92025D	92025-2172	SHIM,T=1.33	AR	AR
92025E	92025-2173	SHIM,T=1.38	AR	AR
92025F	92025-2174	SHIM,T=1.43	AR	AR
92025G	92025-2175	SHIM,T=1.48	AR	AR
92025H	92025-2207	SHIM,T=1.53	AR	AR
92026	92026-2052	SPACER	1	1
92033	92033-1099	RING-SNAP	2	2
92055	92055-2072	RING-O	1	1
92180	92180-2027	SHIM	AR	AR
130	130G0825	BOLT-FLANGED	1	1
510	510A5100	KEY-WOODRUFF	1	1
511	511A0735	KEY-SUNK	1	1

This catalog covers:

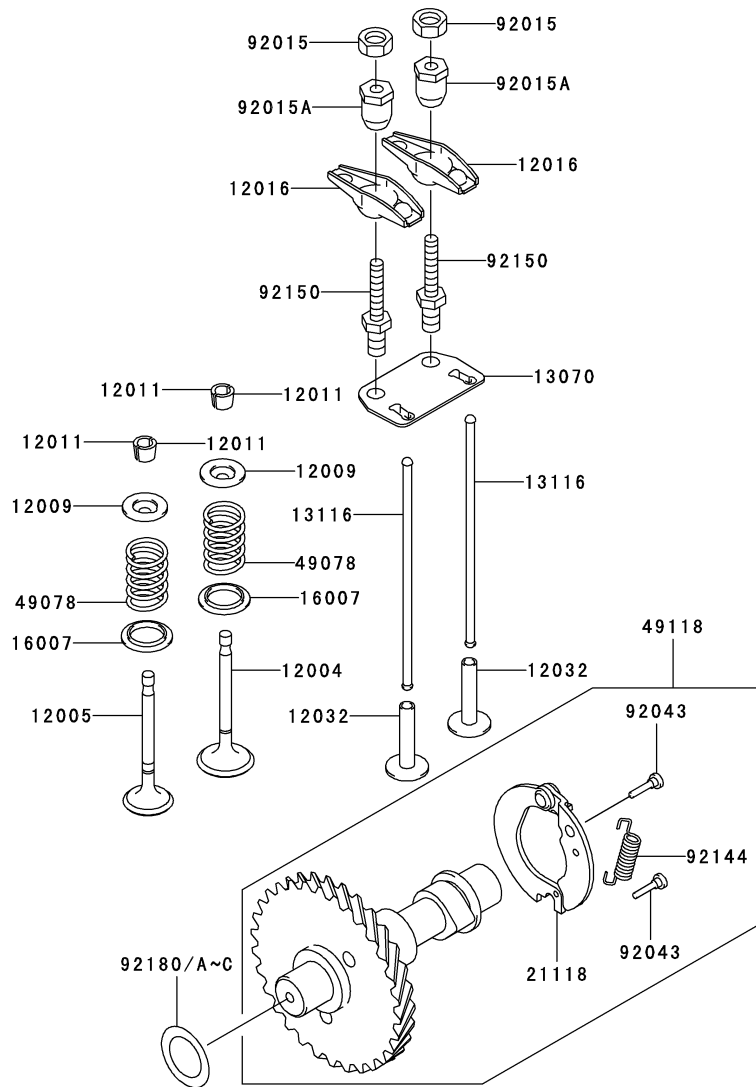
FE250D- □ G81

03

This fig. covers:

VALVE/CAMSHAFT

E0130-A011F



Ref. No.	Part No.	Description	Quantity	
			A	B
12004	12004-2093	VALVE-INTAKE	1	1
12005	12005-2081	VALVE-EXHAUST	1	1
12009	12009-2066	RETAINER-VALVE SPRING	2	2
12011	12011-2056	COLLET	4	4
12016	12016-2060	ARM-ROCKER	2	2
12032	12032-2060	TAPPET	2	2
13070	13070-2086	GUIDE	1	1
13116	13116-2071	ROD-PUSH	2	2
16007	16007-2072	SEAT-SPRING	2	2
21118	21118-2087	DECOMPRESSOR	1	1
49078	49078-2067	SPRING-ENGINE VALVE	2	2
49118	49118-2108	CAMSHAFT-COMP	1	1
92015	92015-2240	NUT	2	2
92015A	92015-2253	NUT	2	2
92043	92043-2113	PIN	2	2
92144	92144-2323	SPRING	1	1
92150	92150-2198	BOLT	2	2
92180	92180-2010	SHIM,T=0.3	AR	AR
92180A	92180-2011	SHIM,T=0.4	AR	AR
92180B	92180-2012	SHIM,T=0.5	AR	AR
92180C	92180-2062	SHIM,T=0.2	AR	AR

This catalog covers:

FE250D- □ G81

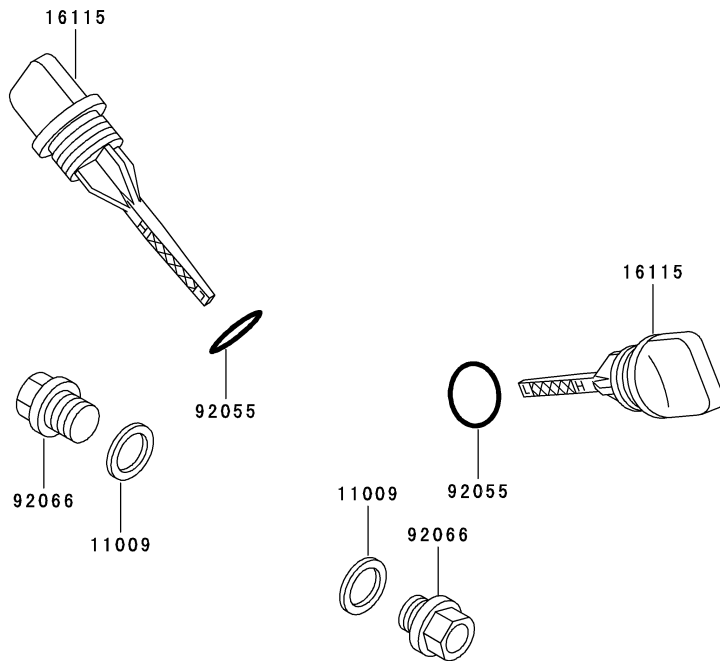
04

This fig. covers:

LUBRICATION-EQUIPMENT

E0140-A007A

Ref. No.	Part No.	Description	Quantity	
			A	B
11009	11009-2175	GASKET,14.2X19X2	2	2
16115	16115-2079	CAP-OIL FILLER	2	2
92055	92055-2185	RING-O,20MM	2	2
92066	92066-2203	PLUG,DRAIN	2	2



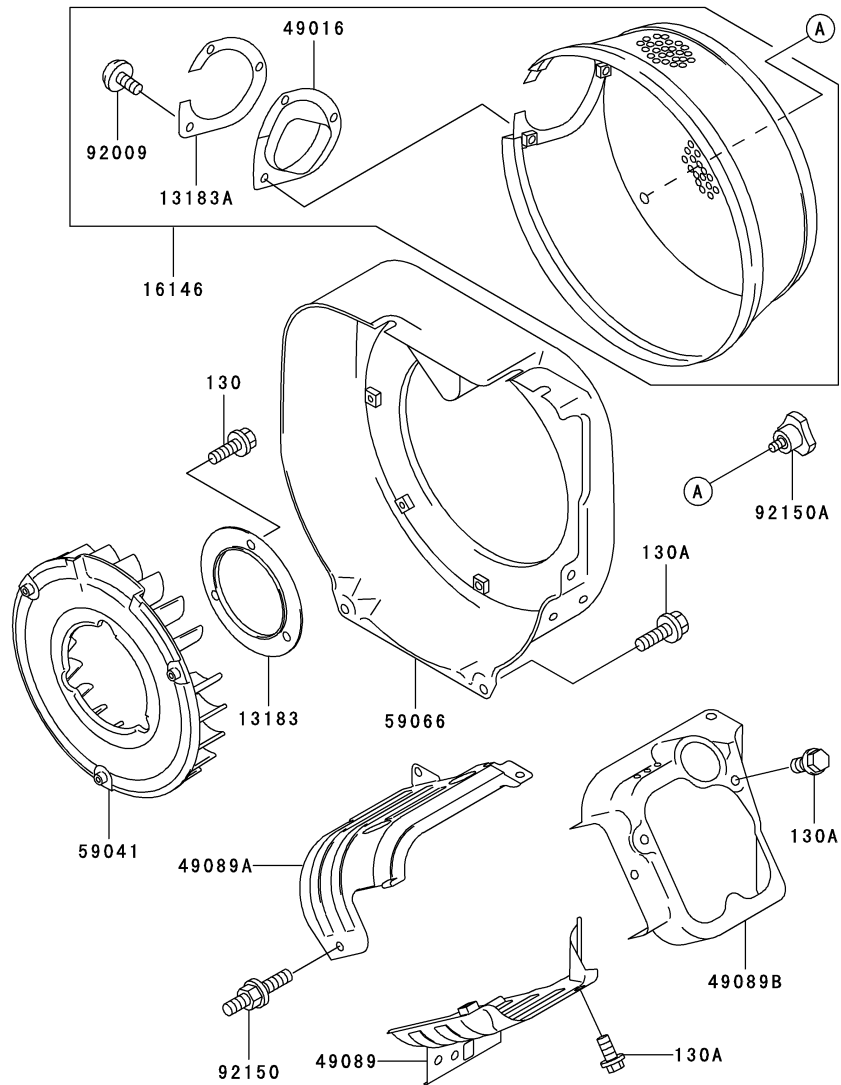
This catalog covers:

FE250D- □ G81

This fig. covers:

05 COOLING-EQUIPMENT

E0150-A285C



Ref. No.	Part No.	Description	Quantity	
			A	B
13183	13183-2407	PLATE	1	1
13183A	13183-2483	PLATE	1	1
16146	16146-2193	COVER-ASSY	1	1
49016	49016-2082	COVER-SEAL	1	1
49089	49089-2326-9H	SHROUD-ENGINE	1	1
49089A	49089-2328-9H	SHROUD-ENGINE	1	1
49089B	49089-2360-9H	SHROUD-ENGINE	1	1
59041	59041-2072	FAN	1	1
59066	59066-2721-9H	HOUSING-FAN	1	1
92009	92009-2243	SCREW,5X10	3	3
92150	92150-2197	BOLT	1	1
92150A	92150-2264	BOLT	4	4
130	130G0610	BOLT-FLANGED	3	3
130A	130G0612	BOLT-FLANGED	11	11

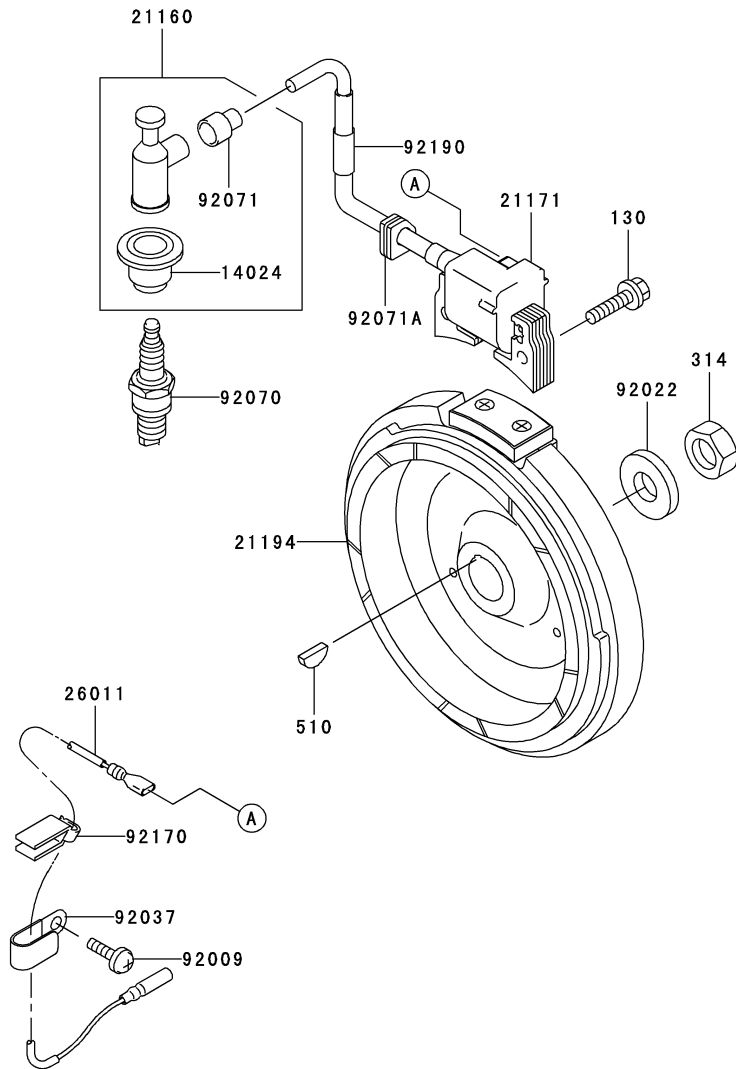
This catalog covers:

FE250D- □ G81

This fig. covers:

06 ELECTRIC-EQUIPMENT

E0160-A568C



Ref. No.	Part No.	Description	Quantity	
			A	B
14024	14024-2234	COVER	1	1
21160	21160-2051	CAP-ASSY-PLUG	1	1
21171	21171-2206	COIL-ASSY-IGNITION	1	1
21194	21194-2241	FLYWHEEL-COMP	1	1
26011	26011-2334	WIRE-LEAD,L=350	1	1
92009	92009-2308	SCREW	1	1
92022	92022-2205	WASHER	1	1
92037	92037-2171	CLAMP	1	1
92070	92070-2077	PLUG-SPARK,BPR5ES(NGK),SOLID	1	1
92071	92071-2008	GROMMET	1	1
92071A	92071-2112	GROMMET	1	1
92170	92170-2017	CLAMP	1	1
92190	92190-2069	TUBE,7.5X10X35	1	1
130	130B0525	BOLT-FLANGED	2	2
314	314G1600	NUT-HEX-FINE	1	1
510	510A5100	KEY-WOODRUFF	1	1

This catalog covers:

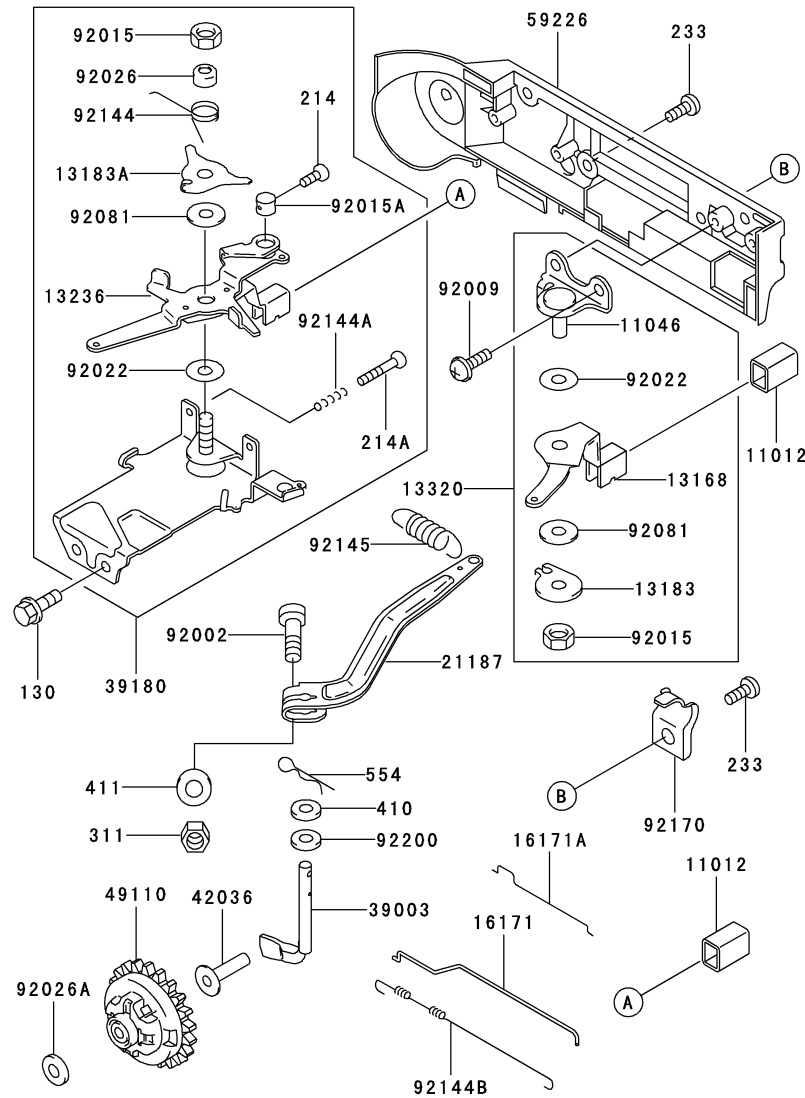
FE250D- □ G81

07

This fig. covers:

CONTROL-EQUIPMENT

E0170-A548A



Ref. No.	Part No.	Description	Quantity	
			A	B
11012	11012-2282	CAP	2	2
11046	11046-2143	BRACKET	1	1
13168	13168-2314	LEVER	1	1
13183	13183-2334	PLATE	1	1
13183A	13183-2343	PLATE	1	1
13236	13236-2116	LEVER-COMP	1	1
13320	13320-2021	LEVER-ASSY	1	1
16171	16171-2063	LINK	1	1
16171A	16171-2064	LINK	1	1
21187	21187-2061	ARM-ASSY	1	1
39003	39003-2076	ARM-PIVOT	1	1
39180	39180-2643	PANEL-ASSY-CONTROL	1	1
42036	42036-2060	SLEEVE	1	1
49110	49110-2069	GOVERNOR-ASSY	1	1
59226	59226-2229	PANEL-CONTROL	1	1
92002	92002-2269	BOLT	1	1
92009	92009-2203	SCREW	2	2
92015	92015-2051	NUT	2	2
92015A	92015-2120	NUT	1	1
92022	92022-2103	WASHER	2	2
92026	92026-2158	SPACER	1	1
92026A	92200-2036	SPACER	1	1
92081	92081-2104	SPRING	2	2
92144	92144-2257	SPRING	1	1
92144A	92144-2266	SPRING	2	2
92144B	92144-2279	SPRING	1	1
92145	92145-2054	SPRING	1	1
92170	92170-2035	CLAMP	1	1
92200	92200-2029	WASHER,6.5X11.5X2.0	1	1
130	130G0612	BOLT-FLANGED	2	2
214	214B0408	SCREW-PAN+-	1	1
214A	214B0422	SCREW-PAN+-	2	2
233	233F0514	SCREW-PAN-WP+-	4	4
311	311B0600	NUT-HEX	1	1
410	410B0600	W-PLAIN-S	1	1
411	411B0600	WASHER-PLAIN	1	1
554	554A0600	PIN-SNAP	1	1

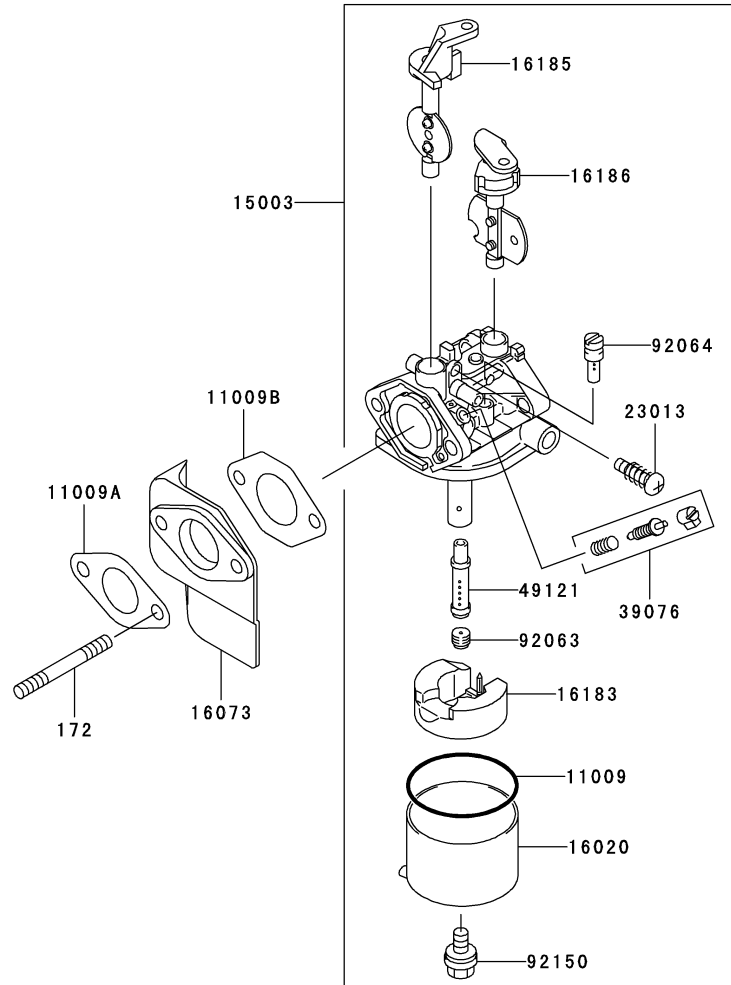
This catalog covers:

FE250D- □ G81

This fig. covers:

08 CARBURETOR

E0180-A667A



Ref. No.	Part No.	Description	Quantity	
			A	B
11009	11009-2919	GASKET	1	1
11009A	11009-2927	GASKET,INSULATOR	1	1
11009B	11009-2928	GASKET,CARBURETOR	1	1
15003	15003-2888	CARBURETOR-ASSY	1	1
16020	16020-2123	CHAMBER-FLOAT	1	1
16073	16073-2150	INSULATOR	1	1
16183	16183-2005	FLOAT-ASSY	1	1
16185	16185-2003	VALVE-ASSY-THROTTLE	1	1
16186	16186-2002	VALVE-ASSY-CHOKE	1	1
23013	23013-2054	SCREW-ASSY	1	1
39076	39076-2055	LIMITER	1	1
49121	49121-2210	NOZZLE-MAIN	1	1
92063	92063-2283	JET-MAIN,#82	1	1
92064	92064-2086	JET-PILOT,#40	1	1
92150	92150-2209	BOLT	1	1
172	172G0677	BOLT-STUD	2	2

This catalog covers:

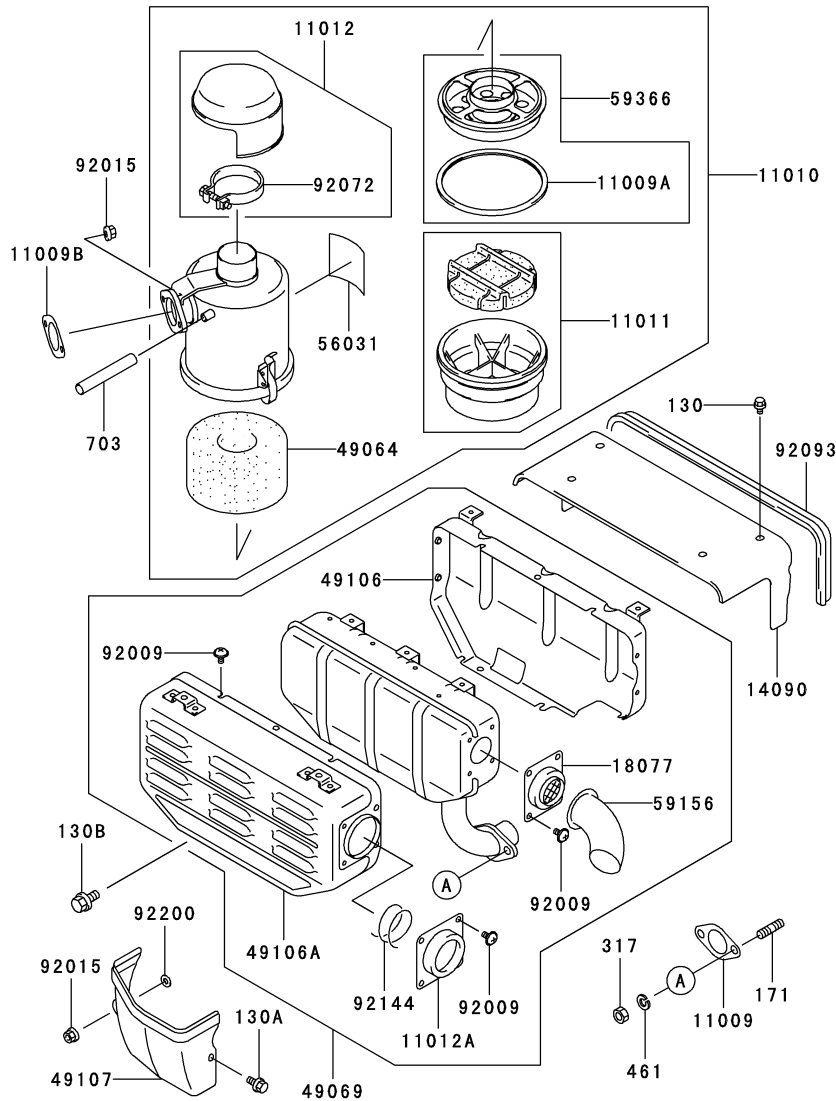
FE250D- □ G81

09

This fig. covers:

AIR-FILTER/MUFFLER

E0190-A396B



Ref. No.	Part No.	Description	Quantity	
			A	B
11009	11009-2487	GASKET,MUFFLER	1	1
11009A	11009-2859	GASKET	1	1
11009B	11009-2925	GASKET,AIR FILTER	1	1
11010	11010-2547-9H	FILTER-ASSY-AIR	1	1
11011	11011-2325	CASE-AIR FILTER	1	1
11012	11012-2135-9H	CAP,AIR FILTER	1	1
11012A	11012-2322-9X	CAP	1	1
14090	14090-2019-9H	COVER	1	1
18077	18077-2094	ARRESTER-SPARK	1	1
49064	49064-2054	FILTER-AIR	1	1
49069	49069-2230	MUFFLER-ASSY	1	1
49106	49106-2514-9X	COVER-MUFFLER	1	1
49106A	49106-2549-9X	COVER-MUFFLER	1	1
49107	49107-2129-9H	COVER-EXHAUST PIPE	1	1
56031	56031-2223	LABEL-MANUAL	1	1
59156	59156-2230-9Y	PIPE-TAIL	1	1
59366	59366-2065	GRATE	1	1
92009	92009-2322	SCREW	15	15
92015	92015-1193	NUT	3	3
92072	92072-2073	BAND	1	1
92093	92093-2094	SEAL	1	1
92144	92144-2262	SPRING	1	1
92200	92200-2070	WASHER	1	1
130	130B0508	BOLT-FLANGED	4	4
130A	130G0612	BOLT-FLANGED	2	2
130B	130G0816	BOLT-FLANGED	1	1
171	171G0820	BOLT-STUD	2	2
317	317R0800	NUT-HEX-SMALL	2	2
461	461F0800	WASHER-SPRING	2	2
703	703A071000	TUBE-RUBBER	1	1

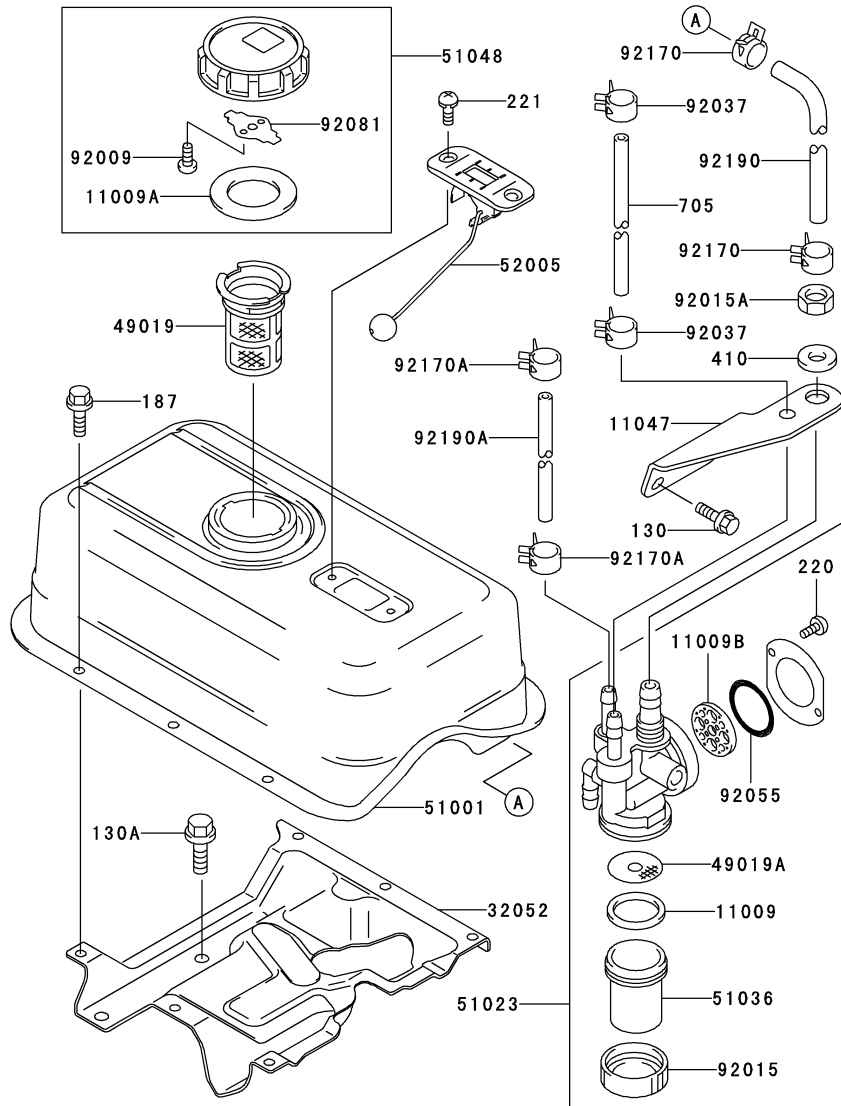
This catalog covers:

FE250D- □ G81

This fig. covers:

10 FUEL-TANK/FUEL-VALVE

E0200-A006C



Ref. No.	Part No.	Description	Quantity	
			A	B
11009	11009-2021	GASKET	1	1
11009A	11009-2115	GASKET	1	1
11009B	11009-2847	GASKET	1	1
11047	11047-2065	BRACKET	1	1
32052	32052-2201-9H	BRACKET-TANK	1	1
49019	49019-2051	FILTER-FUEL	1	1
49019A	49019-2095	FILTER-FUEL	1	1
51001	51001-2241-9H	TANK-COMP-FUEL	1	1
51023	51023-2151	TAP-ASSY	1	1
51036	51036-2066	CUP,FUEL TAP	1	1
51048	51048-2055	CAP-ASSY-TANK	1	1
52005	52005-2100	GAUGE	1	1
92009	92009-2021	SCREW	2	2
92015	92015-2007	NUT	1	1
92015A	92015-2317	NUT	1	1
92037	92037-2001	CLAMP	2	2
92055	92055-2153	RING-O	1	1
92081	92081-2036	SPRING	1	1
92170	92170-2082	CLAMP	2	2
92170A	92170-2084	CLAMP	2	2
92190	92190-2082	TUBE,7X12X220	1	1
92190A	92190-2083	TUBE,3.5X7.9X120	1	1
130	130G0612	BOLT-FLANGED	2	2
130A	130G0816	BOLT-FLANGED	4	4
187	187L0612	BOLT-UPSET-WSP	6	6
220	220B0308	SCREW-PAN-CROS	2	2
221	221F0512	SCREW-CSK-CROSS	2	2
410	410B1000	W-PLAIN-S	1	1
705	705A041000	TUBE-BRAID	1	1

This catalog covers:

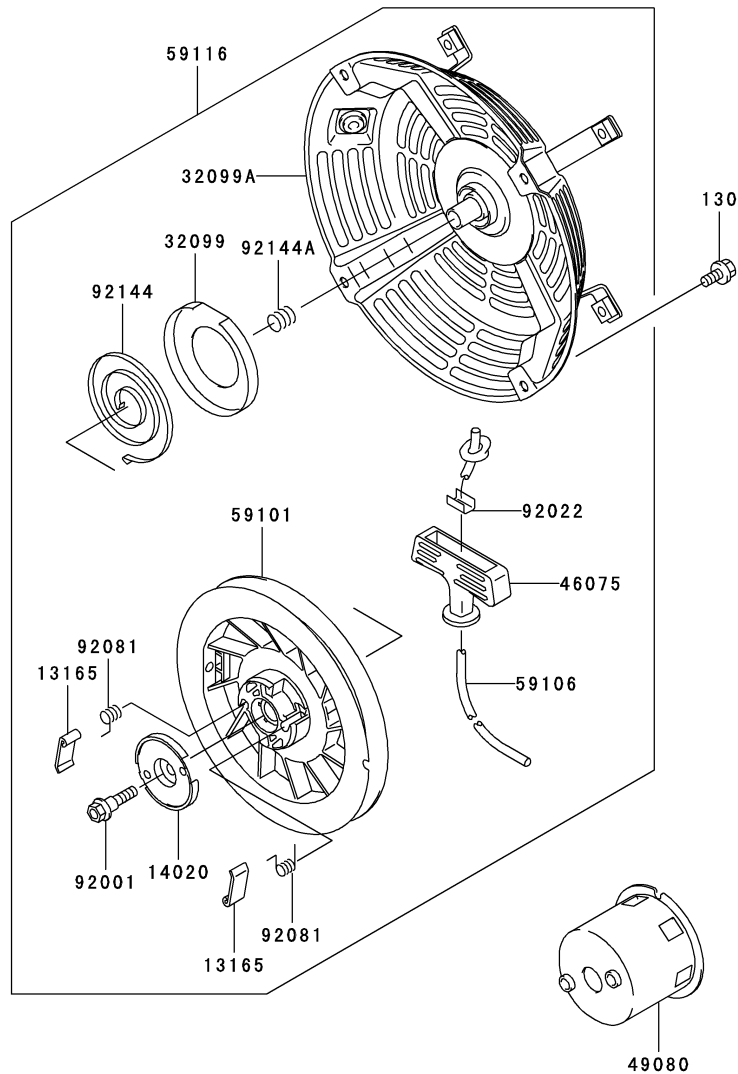
FE250D- □ G81

11

This fig. covers:

STARTER

E0210-A198A



Ref. No.	Part No.	Description	Quantity	
			A	B
13165	13165-2073	PAWL,RECOIL STARTER	2	2
14020	14020-2094	RETAINER,RECOIL STARTER	1	1
32099	32099-2193	CASE,SPRING	1	1
32099A	32099-2355-YK	CASE,RECOIL STARTER	1	1
46075	46075-2092	GRIP,RECOIL STARTER	1	1
49080	49080-2162	PULLEY-STARTING	1	1
59101	59101-2092	REEL,RECOIL STARTER	1	1
59106	59106-2099	ROPE,4.5X1550	1	1
59116	59116-2344-YK	STARTER-ASSY-RECOIL	1	1
92001	92001-2027	BOLT	1	1
92022	92022-2248	WASHER	1	1
92081	92081-2021	SPRING	2	2
92144	92144-2055	SPRING,RECOIL	1	1
92144A	92144-2212	SPRING	1	1
130	130G0612	BOLT-FLANGED	4	4

This catalog covers:

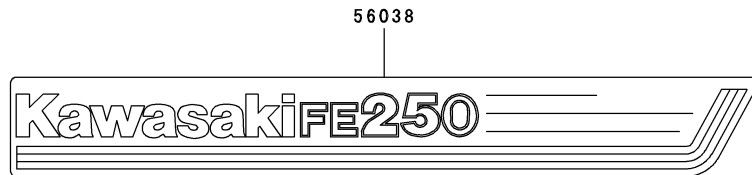
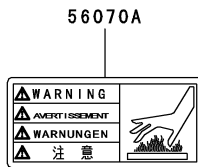
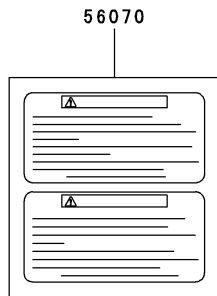
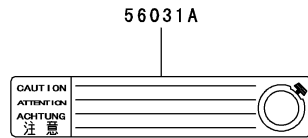
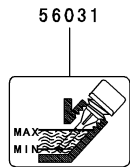
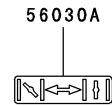
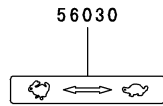
FE250D- □ G81

12

This fig. covers:

LABEL

F0290-B271A



Ref. No.	Part No.	Description	Quantity	
			A	B
56030	56030-2385	LABEL,THROTTLE	1	1
56030A	56030-2386	LABEL,CHOKE	1	1
56031	56031-2458	LABEL-MANUAL	1	1
56031A	56031-2465	LABEL-MANUAL	1	1
56038	56038-2730	LABEL-BRAND	1	1
56070	56070-2003	LABEL-WARNING	1	1
56070A	56070-2010	LABEL-WARNING	1	1
56070B	56070-2066	LABEL-WARNING	1	1

This catalog covers:

FE250D- □ G81

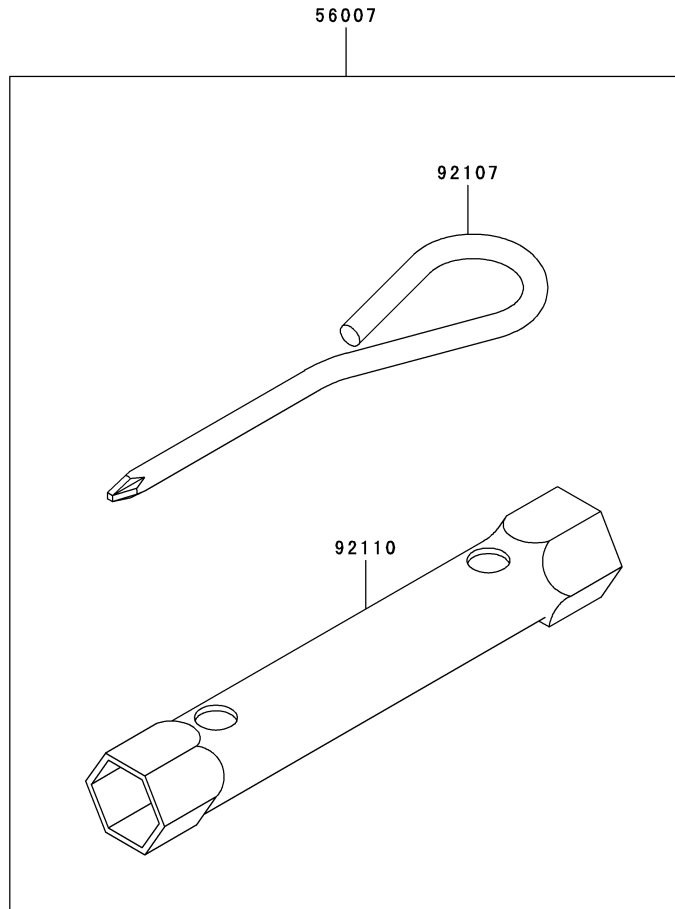
13

This fig. covers:

TOOL

F0300-A001A

Ref. No.	Part No.	Description	Quantity	
			A	B
56007	56007-2051	TOOLKIT	1	1
92107	92107-2057	TOOL-DRIVER	1	1
92110	92110-2051	TOOL-WRENCH,19X21	1	1



This catalog covers:

FE250D- □ G81

This fig. covers:

PART NAME INDEX

AIR-FILTER/MUFFLER.....	09
CARBURETOR.....	08
CONTROL-EQUIPMENT.....	07
COOLING-EQUIPMENT.....	05
CYLINDER/CRANKCASE	01
ELECTRIC-EQUIPMENT.....	06
FUEL-TANK/FUEL-VALVE	10
LABEL.....	12
LUBRICATION-EQUIPMENT.....	04
PISTON/CRANKSHAFT	02
STARTER.....	11
TOOL.....	13
VALVE/CAMSHAFT	03

This catalog covers:

FE250D- **G81**

This fig. covers:

NUMERICAL PARTS INDEX

Part No.	Fig No.	Part No.	Fig No.	Part No.	Fig No.	Part No.	Fig No.	Part No.	Fig No.
11004-2106	01	13251-6038	02	49089-2360-9H	05	92022-2248	11	92180-2027	02
11008-2086	01	13320-2021	07	49106-2514-9X	09	92025-2168	02	92180-2062	03
11009-2021	10	14020-2094	11	49106-2549-9X	09	92025-2169	02	92190-2069	06
11009-2115	10	14024-2234	06	49107-2129-9H	09	92025-2170	02	92190-2082	10
11009-2175	04	14090-2019-9H	09	49110-2069	07	92025-2171	02	92190-2083	10
11009-2487	09	15003-2888	08	49118-2108	03	92025-2172	02	92200-2029	07
11009-2847	10	16007-2072	03	49120-2224	01	92025-2173	02	92200-2036	07
11009-2859	09	16020-2123	08	49121-2210	08	92025-2174	02	92200-2070	09
11009-2919	08	16073-2150	08	51001-2241-9H	10	92025-2175	02		
11009-2923	01	16115-2079	04	51023-2151	10	92025-2207	02		
11009-2925	09	16126-2107	01	51036-2066	10	92026-2052	02		
11009-2927	08	16146-2193	05	51048-2055	10	92026-2158	07		
11009-2928	08	16171-2063	07	510A5100	02	92033-1099	02		
11010-2547-9H	09	16171-2064	07	510A5100	06	92037-2001	10		
11011-2325	09	16183-2005	08	511A0735	02	92037-2171	06		
11012-2135-9H	09	16185-2003	08	52005-2100	10	92043-1037	01		
11012-2282	07	16186-2002	08	554A0600	07	92043-1263	01		
11012-2322-9X	09	171G0820	09	56007-2051	13	92043-2113	03		
11022-6002	01	172G0677	08	56030-2385	12	92045-2188	01		
11046-2143	07	18020-2073	01	56030-2386	12	92049-2097	01		
11047-2065	10	18077-2094	09	56031-2223	09	92049-2199	01		
11061-2069	01	187L0612	10	56031-2458	12	92049-2220	01		
12004-2093	03	21118-2087	03	56031-2465	12	92055-1343	01		
12005-2081	03	21160-2051	06	56038-2730	12	92055-2072	02		
12009-2066	03	21171-2206	06	56070-2003	12	92055-2153	10		
12011-2056	03	21187-2061	07	56070-2010	12	92055-2185	04		
12016-2060	03	21194-2241	06	56070-2066	12	92063-2283	08		
12032-2060	03	214B0408	07	59041-2072	05	92064-2086	08		
13001-2128	02	214B0422	07	59051-2097	02	92066-2203	04		
13002-2077	02	220B0308	10	59056-2995	02	92070-2077	06		
13008-2055	02	221F0512	10	59066-2721-9H	05	92071-2008	06		
13025-2097	02	23013-2054	08	59101-2092	11	92071-2112	06		
13029-2117	02	233F0514	07	59106-2099	11	92072-2073	09		
13031-2056	02	26011-2334	06	59116-2344-YK	11	92081-2021	11		
13042-6012	02	311B0600	07	59156-2230-9Y	09	92081-2036	10		
13070-2086	03	314G1600	06	59226-2229	07	92081-2104	07		
130B0508	09	317R0800	09	59366-2065	09	92093-2094	09		
130B0525	06	32052-2201-9H	10	703A071000	09	92107-2057	13		
130G0610	05	32099-2193	11	705A041000	10	92110-2051	13		
130G0612	05	32099-2355-YK	11	92001-2027	11	92144-2055	11		
130G0612	07	39003-2076	07	92002-2053	02	92144-2212	11		
130G0612	09	39076-2055	08	92002-2269	07	92144-2257	07		
130G0612	10	39180-2643	07	92004-2083	01	92144-2262	09		
130G0612	11	410B0600	07	92009-2021	10	92144-2266	07		
130G0816	09	410B1000	10	92009-2203	07	92144-2279	07		
130G0816	10	411B0600	07	92009-2243	05	92144-2323	03		
130G0825	02	42036-2060	07	92009-2308	01	92145-2054	07		
130T0845	01	46075-2092	11	92009-2308	06	92150-2145	01		
13107-2088	02	46102-2075	02	92009-2322	09	92150-2197	05		
13116-2071	03	461F0800	09	92015-1193	02	92150-2198	03		
13165-2073	11	49015-6135	01	92015-1193	09	92150-2209	08		
13168-2314	07	49016-2082	05	92015-2007	10	92150-2264	05		
13183-2299	01	49019-2051	10	92015-2051	07	92151-2130	01		
13183-2334	07	49019-2095	10	92015-2120	07	92170-2017	06		
13183-2343	07	49064-2054	09	92015-2240	03	92170-2035	07		
13183-2407	05	49069-2230	09	92015-2253	03	92170-2082	10		
13183-2483	05	49078-2067	03	92015-2317	10	92170-2084	10		
13236-2116	07	49080-2162	11	92022-2103	07	92180-2010	03		
13251-2078	02	49089-2326-9H	05	92022-2116	02	92180-2011	03		
13251-6038	02	49089-2328-9H	05	92022-2205	06	92180-2012	03		